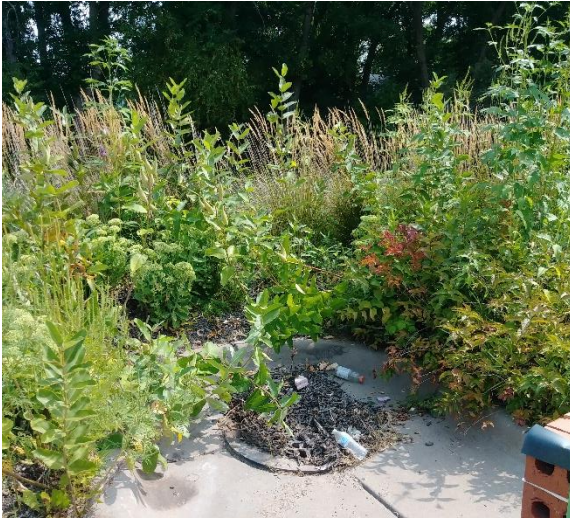


# BEST MANAGEMENT PRACTICE

## MAINTENANCE PROGRAM

The Chisago Soil & Water Conservation District (SWCD) partnered with the Chisago Lakes Lake Improvement District, Chisago County, the City of Lindström, and the City of Chisago City to work on maintaining some of the publicly owned best management practices in the area. The SWCD hired two staff people in 2020 to work an average of 15-25 hours per week depending on the season.

- 300 hours were logged by the SWCD Maintenance Staff in 2020
- 6,000 pounds of sediment removed from pretreatment chambers
- 100 native plants planted
- Countless loads of weeds removed



### Partners:

Chisago Lakes Lake Improvement District  
Chisago County  
City of Lindström  
City of Chisago City  
Chisago Soil & Water Conservation District

### Targeted Water:

Chisago Lakes Chain of Lakes