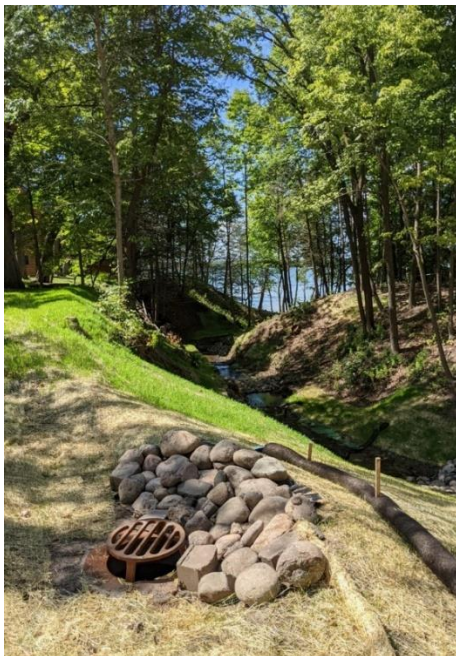


PARMLY CAMPUS GULLY

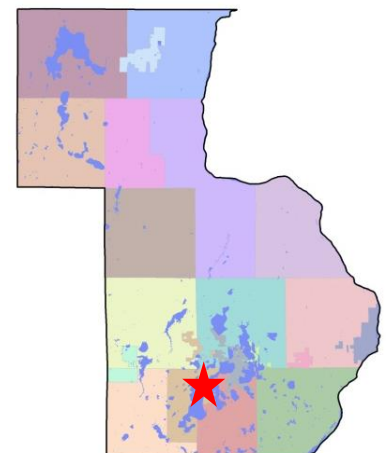
GULLY STABILIZATION



A large, eroding gully was found on the Parmly on the Lake campus in Chisago City through a subwatershed analysis in 2012. The Chisago Soil and Water Conservation District (SWCD) knew this project would be a big one if we could ever find the funding to take it on. The gully is 325 feet long and drains directly into Green Lake. The gully is actively eroding and carries sediment, phosphorus, and debris from the channel as well as upstream into the lake. In 2021, project construction began. The process started with tree work during the late winter, then on to construction during the summer and fall. The project consists of slope stabilization, rock and log checks to slow water down, gabion cages, piping, and diversions. These practices are designed to slow water down, allow infiltration, and prevent and control erosion.



Photos completed gully stabilization



Partners:

Parmly on the Lake
Monarch + Ecumen
Chisago Lakes Lake Improvement District
Chisago SWCD

Pollution Reduction:

Total Suspended Solids: 120 tons/year
Total Phosphorus: 121 pounds/year
(*BWSR Spreadsheet*)

Targeted Water:

Green Lake

Completion Date:

October 2021

May I Visit?

No – Please be respectful of private property and the Parmly Residents.